

PORTABLE DAVIT SYSTEM

Complete
Resource Guide



Portable Davit System- Portable Base

3-Piece Portable Base- 60" max width

Designed for manholes & other confined spaces where a portable base is needed.

Specs

Weight Capacity-
130-310 lbs ANSI

Capacity- 1 entrant only, 310 lb.
max

Item weight- 162.75 lbs.

Hardware Material- Powder
coated aluminum, plated alloy
steel

Lifeline- Galvanized steel wire
rope

Standards- OSHA 1926.502
ANSI 1910.66

Components

PD1- Davit Mast Assembly

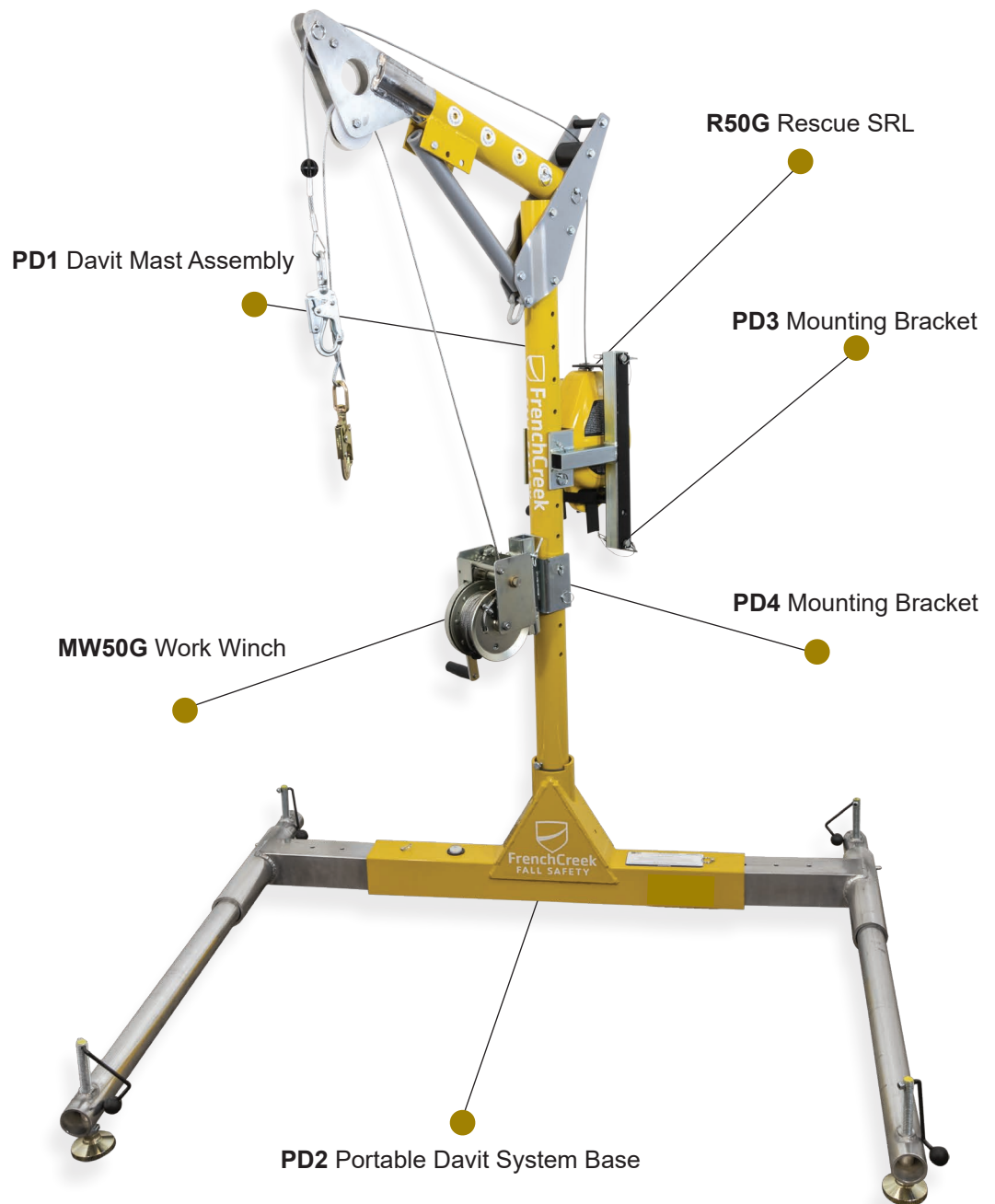
PD2- Portable Davit Base

PD3- R50G Mounting Bracket

PD4- MW50G Mounting Bracket

R50G- Rescue SRL

MW50G- Work Winch



Portable Davit System- Portable Base

Ordering Information

PD1 Davit Mast Assembly

12"-30" offset reach



PD1

Davit mast assembly with telescoping adjustability from 12"-30". Includes attachment points for mechanical units. Used in conjunction with FrenchCreek Portable Davit system bases. Item weight 32.75 lbs.

PD2 Portable Davit System Base

"36-60" adjustable base width



PD2

3-piece portable davit system base adjusts from 36"-60". For temporary application. Includes bullseye level, tool free height adjustment. Base material: powder-coated aluminum & stainless steel. Item weight 58 lbs.

PD3 Mounting Bracket

Attaches R50G Rescue SRL



PD3

Used to attach R50G Rescue SRL to PD1 Davit Mast Assembly. Attaches with locking pins. Material: plated alloy steel. Item weight: 7.2 lbs.

PD4 Mounting Bracket

Attaches MW50G Work Winch



PD4

Used to attach MW50G Work Winch to PD1 Davit Mast Assembly. Attaches with locking pins. Material: plated alloy steel. Item weight: 4.8 lbs.

R50G Rescue SRL

ANSI Class SRL-R
3-way unit, 50' length



R50G

50' rescue SRL with raising/lowering capability. Mounts to PD1 Davit Mast Assembly using PD3 Mounting Bracket. Includes dual inertia braking system, pulleys & carabiner, load indicating snaphook. Three lifeline options: galvanized steel, stainless steel, technora rope. Aluminum cast housing. Item weight: 35 lbs.

MW50G Work Winch

50' length



MW50G

Offers raising and lowering capabilities with a friction brake that prevents the unit from free-wheeling when under a load. Mounts to PD1 Davit Mast Assembly using PD4 Mounting Bracket. Includes pulleys, carabiner and swivel snaphook. Three lifeline options: galvanized steel, stainless steel, technora rope. Aluminum cast housing. Item weight: 25 lbs.

Portable Davit System- Core Mount Sleeve

Core Mount Sleeve Base- 9" deep sleeve

Ideally suited for recurrent access locations where mast can be easily moved.

Specs

Weight Capacity-
130-310 lbs. ANSI

Capacity- 1 entrant only, 310 lb.
max

Item weight- 114 lbs.

Hardware Material- Powder
coated aluminum, plated alloy
steel

Lifeline- Galvanized steel wire
rope

Standards- OSHA 1926.502
ANSI 1910.66

Components

PD1- Davit Mast Assembly

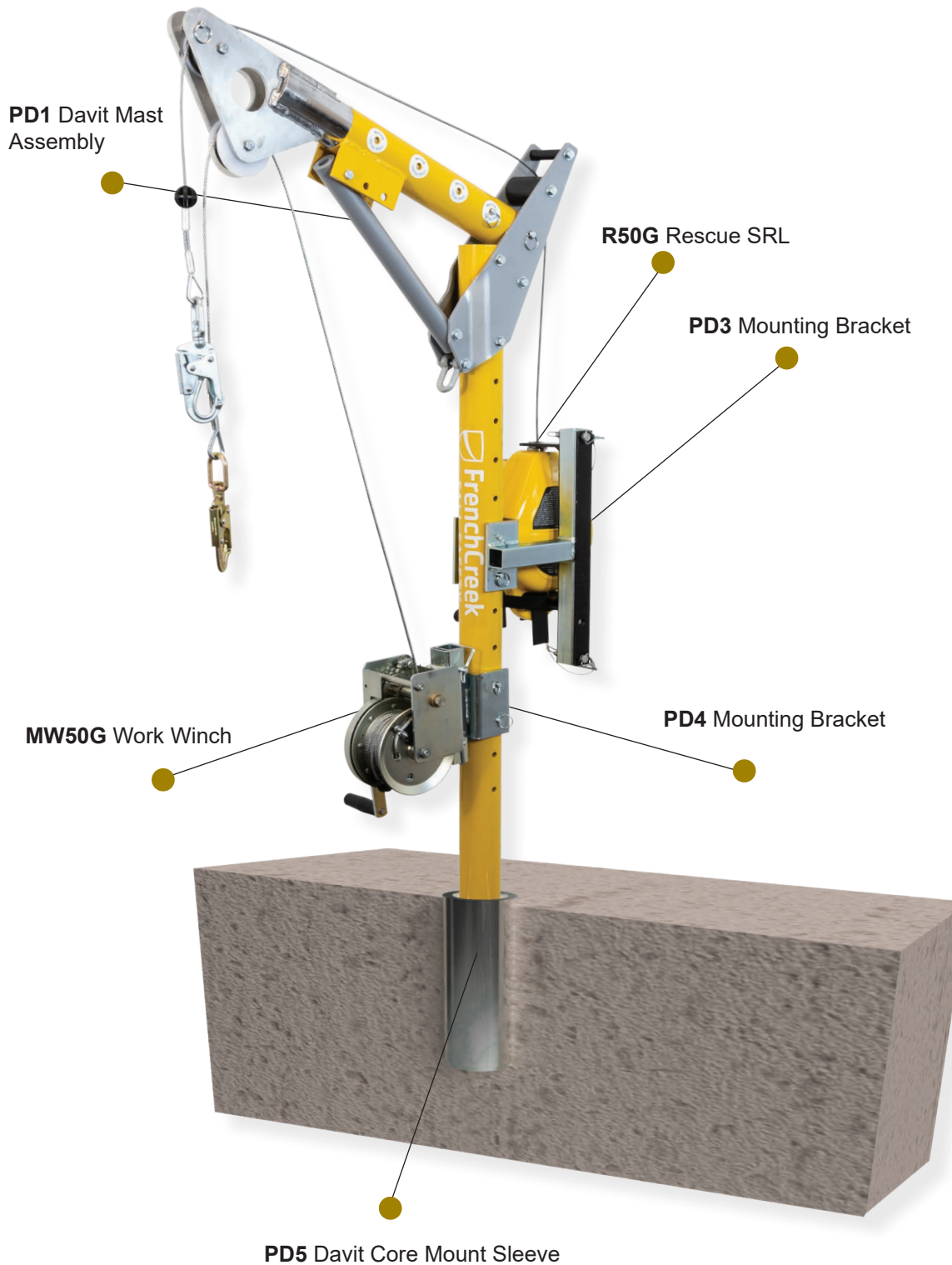
PD5- Davit Core Mount Sleeve

PD3- R50G Mounting Bracket

PD4- MW50G Mounting Bracket

R50G- Rescue SRL

MW50G- Work Winch



Portable Davit System- Core Mount Sleeve

Ordering Information

PD1 Davit Mast Assembly

12"-30" offset reach



PD1

Davit mast assembly with telescoping adjustability from 12"-30". Includes attachment points for mechanical units. Used in conjunction with FrenchCreek Portable Davit system bases. Item weight: 32.75 lbs.

PD5 Core Mount Sleeve Base

Fits 4" (0.10m) diameter core hole



PD5

Designed for slip-in installation sleeve fits 4" diameter core hole. Sleeve 9" deep with PVC insert. Allows for 360° rotation of PD1 Davit Mast Assembly. Item weight: 9.7 lbs.

PD3 Mounting Bracket

Attaches R50G Rescue SRL



PD3

Used to attach R50G Rescue SRL to PD1 Davit Mast Assembly. Attaches with locking pins. Material: plated alloy steel. Item weight: 7.2 lbs.

PD4 Mounting Bracket

Attaches MW50G Work Winch



PD4

Used to attach MW50G Work Winch to PD1 Davit Mast Assembly. Attaches with locking pins. Material: plated alloy steel. Item weight: 4.8 lbs.

R50G Rescue SRL

ANSI Class SRL-R
3-way unit, 50' length



R50G

50' rescue SRL with raising/lowering capability. Mounts to PD1 Davit Mast Assembly using PD3 Mounting Bracket. Includes dual inertia braking system, pulleys & carabiner, load indicating snaphook. Three lifeline options: galvanized steel, stainless steel, technora rope. Aluminum cast housing. Item weight: 35 lbs.

MW50G Work Winch

50' length



MW50G

Offers raising and lowering capabilities with a friction brake that prevents the unit from free-wheeling when under a load. Mounts to PD1 Davit Mast Assembly using PD4 Mounting Bracket. Includes pulleys, carabiner and swivel snaphook. Three lifeline options: galvanized steel, stainless steel, technora rope. Aluminum cast housing. Item weight: 25 lbs.

Floor Mount Cast-In-Place Base- 8"x12" Plate

Ideally suited for high traffic areas to reduce tripping hazards. Cast-in for new concrete construction.

Specs

Weight Capacity-
130-310 lbs. ANSI

Capacity- 1 entrant only, 310 lb.
max

Item weight- 127 lbs.

Hardware Material- Powder
coated aluminum, plated alloy
steel

Lifeline- Galvanized steel wire
rope

Standards- OSHA 1926.502
ANSI 1910.66

Components

PD1- Davit Mast Assembly

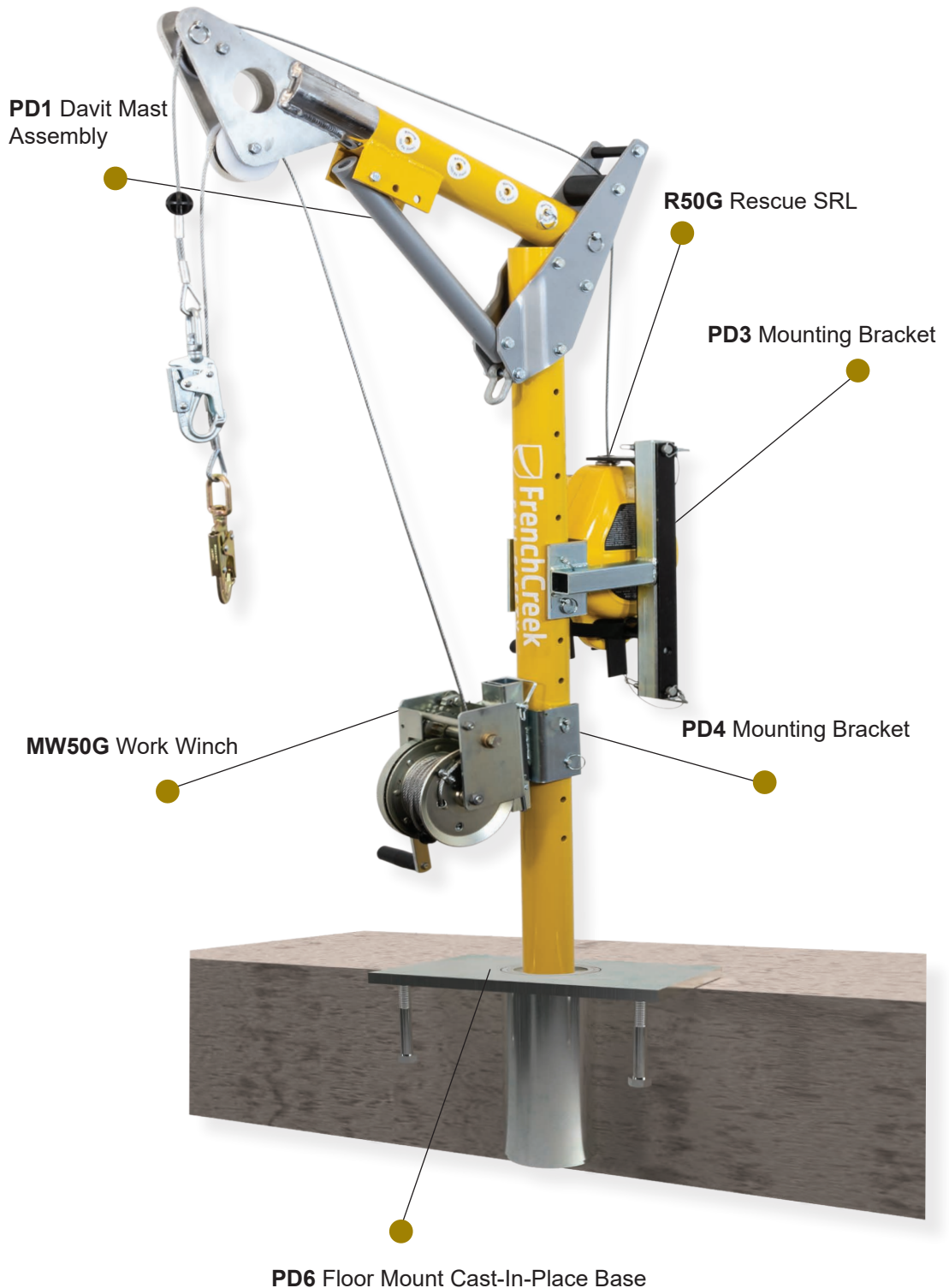
PD6- Floor Mount Cast-In-Place
Base

PD3- R50G Mounting Bracket

PD4- MW50G Mounting Bracket

R50G- Rescue SRL

MW50G- Work Winch



Portable Davit System- Floor mount cast-in place base

Ordering Information

PD1 Davit Mast Assembly

12"-30" offset reach



PD1

Davit mast assembly with telescoping adjustability from 12"-30". Includes attachment points for mechanical units. Used in conjunction with FrenchCreek Portable Davit system bases. Item weight 32.75 lbs.

PD6 Floor Mount Cast-In-Place Base

8"x12" plate with 4" support rods



PD6

Cast-in design for new concrete construction installation. Allows for 360° rotation of PD1 Davit Mast Assembly. 9" deep sleeve with PVC insert. Item weight: 22 lbs.

PD3 Mounting Bracket

Attaches R50G Rescue SRL



PD3

Used to attach R50G Rescue SRL to PD1 Davit Mast Assembly. Attaches with locking pins. Material: plated alloy steel. Item weight: 7.2 lbs.

PD4 Mounting Bracket

Attaches MW50G Work Winch



PD4

Used to attach MW50G Work Winch to PD1 Davit Mast Assembly. Attaches with locking pins. Material: plated alloy steel. Item weight: 4.8 lbs.

R50G Rescue SRL

ANSI Class SRL-R
3-way unit, 50' length



R50G

50' rescue SRL with raising/lowering capability. Mounts to PD1 Davit Mast Assembly using PD3 Mounting Bracket. Includes dual inertia braking system, pulleys & carabiner, load indicating snaphook. Three lifeline options: galvanized steel, stainless steel, technora rope. Aluminum cast housing. Item weight: 35 lbs.

MW50G Work Winch

50' length



MW50G

Offers raising and lowering capabilities with a friction brake that prevents the unit from free-wheeling when under a load. Mounts to PD1 Davit Mast Assembly using PD4 Mounting Bracket. Includes pulleys, carabiner and swivel snaphook. Three lifeline options: galvanized steel, stainless steel, technora rope. Aluminum cast housing. Item weight: 25 lbs.

Portable Davit System- Floor Mount Sleeve Base

Floor Mount Sleeve Base- 9" Tall Sleeve Insert

Designed for confined space entry and rescue when recurring access is needed for concrete or structural steel.

Specs

Weight Capacity-
130-310 lbs. ANSI

Capacity- 1 entrant only, 310 lb.
max

Item weight- 136.75 lbs.

Hardware Material- Powder
coated aluminum, plated alloy
steel

Lifeline- Galvanized steel wire
rope

Standards- OSHA 1926.502
ANSI 1910.66

Components

PD1- Davit Mast Assembly

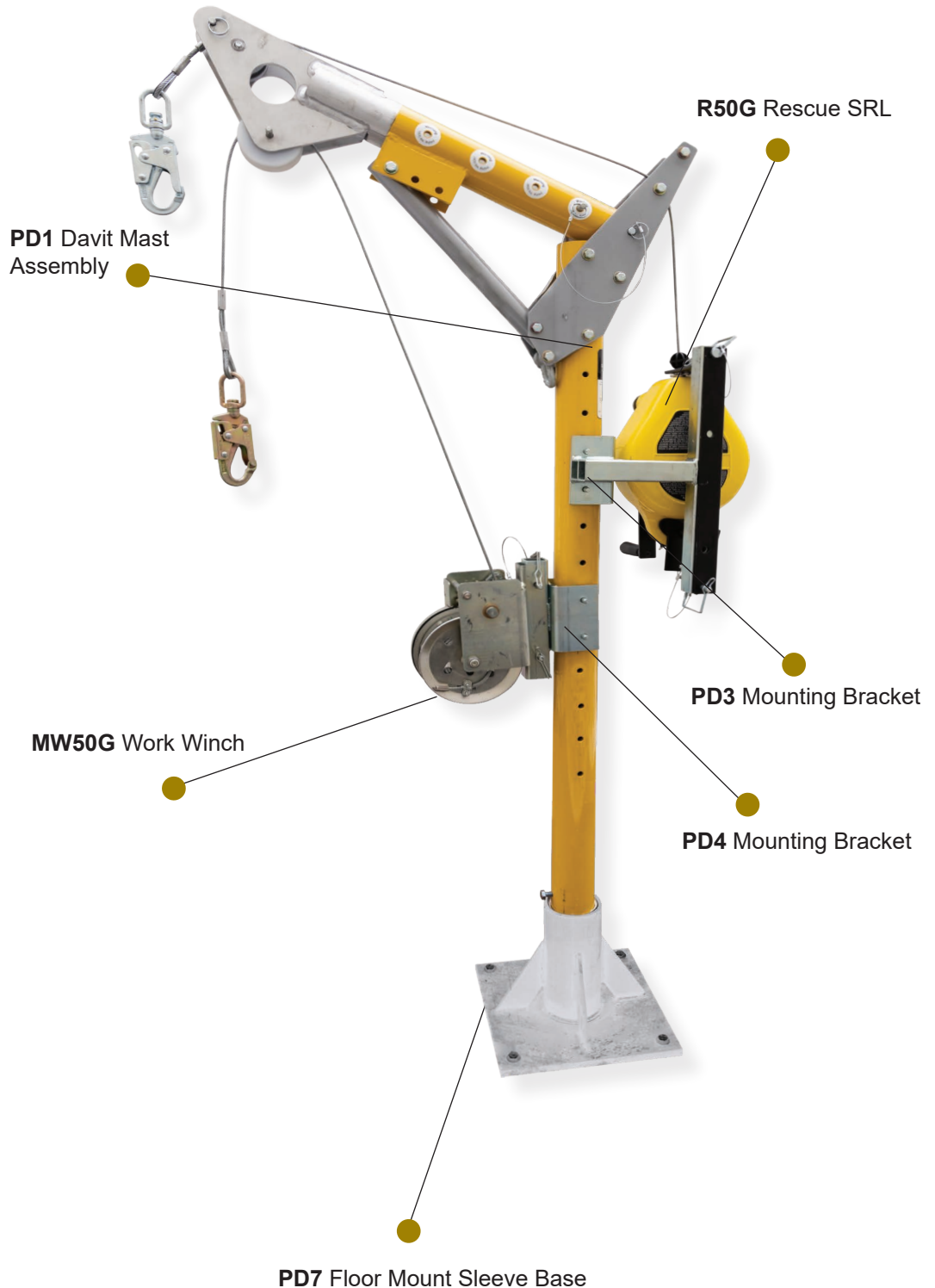
PD7- Floor Mount Sleeve Base

PD3- R50G Mounting Bracket

PD4- MW50G Mounting Bracket

R50G- Rescue SRL

MW50G- Work Winch



Portable Davit System- Floor Mount Sleeve Base

Ordering Information

PD1 Davit Mast Assembly

12"-30" offset reach

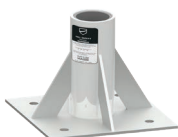


PD1

Davit mast assembly with telescoping adjustability from 12"-30". Includes attachment points for mechanical units. Used in conjunction with FrenchCreek Portable Davit system bases. Item weight 32.75 lbs.

PD7 Floor Mount Sleeve Base

9" Deep Sleeve Insert



PD7

Bolt on design for existing steel and concrete installation. Allows for 360° rotation of PD1 Davit Mast Assembly. 9" tall sleeve with PVC insert. Item weight: 32 lbs.

PD3 Mounting Bracket

Attaches R50G Rescue SRL



PD3

Used to attach R50G Rescue SRL to PD1 Davit Mast Assembly. Attaches with locking pins. Material: plated alloy steel. Item weight: 7.2 lbs.

PD4 Mounting Bracket

Attaches MW50G Work Winch



PD4

Used to attach MW50G Work Winch to PD1 Davit Mast Assembly. Attaches with locking pins. Material: plated alloy steel. Item weight: 4.8 lbs.

R50G Rescue SRL

ANSI Class SRL-R
3-way unit, 50' length



R50G

50' rescue SRL with raising/lowering capability. Mounts to PD1 Davit Mast Assembly using PD3 Mounting Bracket. Includes dual inertia braking system, pulleys & carabiner, load indicating snaphook. Three lifeline options: galvanized steel, stainless steel, technora rope. Aluminum cast housing. Item weight: 35 lbs.

MW50G Work Winch

50' length



MW50G

Offers raising and lowering capabilities with a friction brake that prevents the unit from free-wheeling when under a load. Mounts to PD1 Davit Mast Assembly using PD4 Mounting Bracket. Includes pulleys, carabiner and swivel snaphook. Three lifeline options: galvanized steel, stainless steel, technora rope. Aluminum cast housing. Item weight: 25 lbs.

Wall Mount Sleeve Base- 9" Tall Sleeve Insert

Designed for confined space entry and rescue for vertical concrete or steel structures. Can be bolted or welded.

Specs

Weight Capacity-
130-310 lbs. ANSI

Capacity- 1 entrant only, 310 lb.
max

Item weight- 117.75 lbs.

Hardware Material- Powder
coated aluminum, plated alloy
steel

Lifeline- Galvanized steel wire
rope

Standards- OSHA 1926.502
ANSI 1910.66

Components

PD1- Davit Mast Assembly

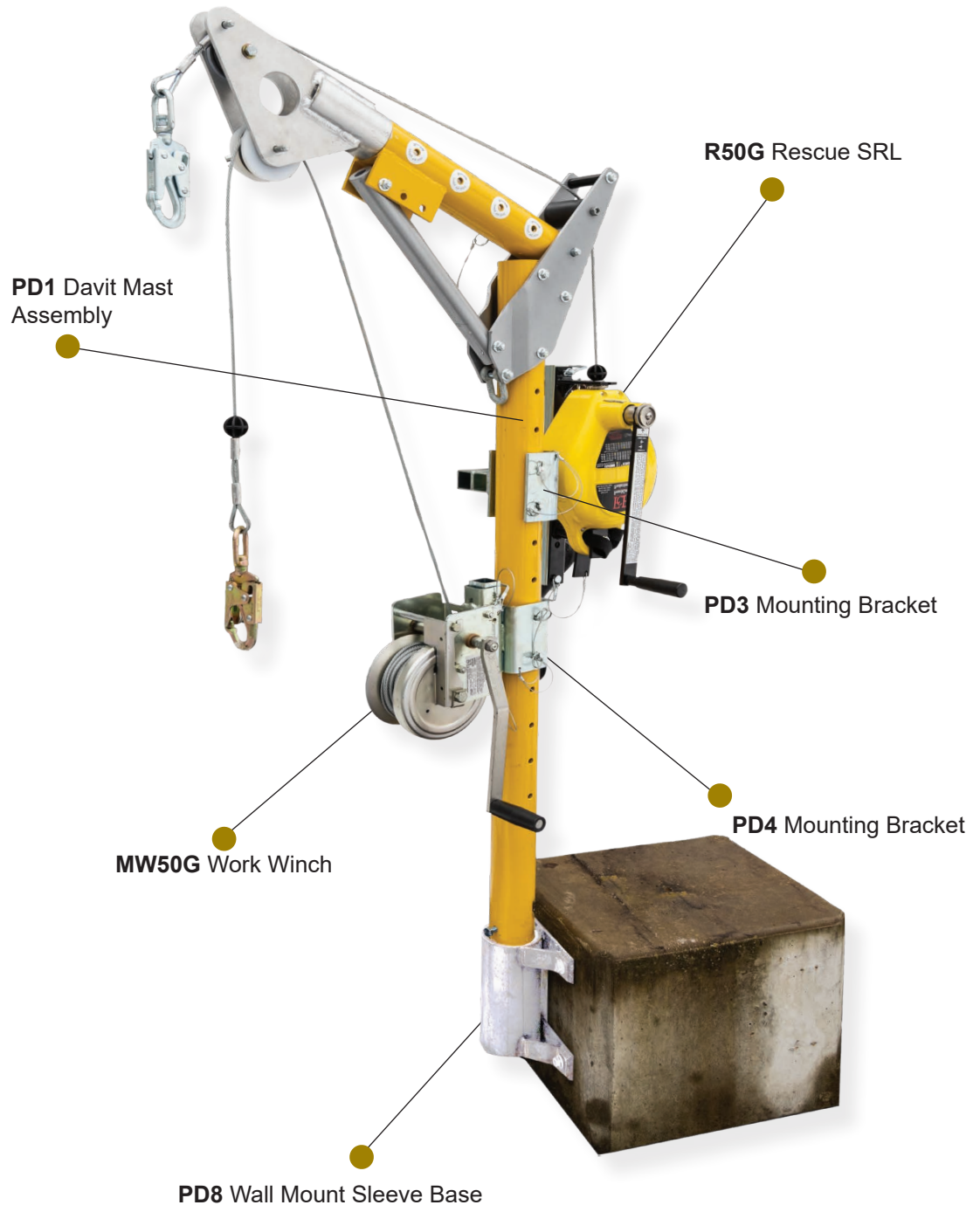
PD8- Wall Mount Sleeve

PD3- R50G Mounting Bracket

PD4- MW50G Mounting Bracket

R50G- Rescue SRL

MW50G- Work Winch



Portable Davit System- Wall Mount Sleeve

Ordering Information

PD1 Davit Mast Assembly

12"-30" offset reach



PD1

Davit mast assembly with telescoping adjustability from 12"-30". Includes attachment points for mechanical units. Used in conjunction with FrenchCreek Portable Davit system bases. Item weight 32.75 lbs.

PD8 Wall Mount Sleeve Base

9" Deep Sleeve Insert



PD8

Bolt on design for existing steel and concrete vertical installation. Allows for 360° rotation of PD1 Davit Mast Assembly. 9" tall sleeve with PVC insert. Item weight: 13 lbs.

PD3 Mounting Bracket

Attaches R50G Rescue SRL



PD3

Used to attach R50G Rescue SRL to PD1 Davit Mast Assembly. Attaches with locking pins. Material: plated alloy steel. Item weight: 7.2 lbs.

PD4 Mounting Bracket

Attaches MW50G Work Winch



PD4

Used to attach MW50G Work Winch to PD1 Davit Mast Assembly. Attaches with locking pins. Material: plated alloy steel. Item weight: 4.8 lbs.

R50G Rescue SRL

ANSI Class SRL-R
3-way unit, 50' length



R50G

50' rescue SRL with raising/lowering capability. Mounts to PD1 Davit Mast Assembly using PD3 Mounting Bracket. Includes dual inertia braking system, pulleys & carabiner, load indicating snaphook. Three lifeline options: galvanized steel, stainless steel, technora rope. Aluminum cast housing. Item weight: 35 lbs.

MW50G Work Winch

50' length



MW50G

Offers raising and lowering capabilities with a friction brake that prevents the unit from free-wheeling when under a load. Mounts to PD1 Davit Mast Assembly using PD4 Mounting Bracket. Includes pulleys, carabiner and swivel snaphook. Three lifeline options: galvanized steel, stainless steel, technora rope. Aluminum cast housing. Item weight: 25 lbs.

Barrel Mount Davit Base- 1/2" to 3-1/2" thick

Designed for bolt on installation to existing edges, walls and other properly rated structures.

Specs

Weight Capacity-
130-310 lbs. ANSI

Capacity- 1 entrant only, 310 lb.
max

Item weight- 136.75 lbs.

Hardware Material- Powder
coated aluminum, plated alloy
steel

Lifeline- Galvanized steel wire
rope

Standards- OSHA 1926.502
ANSI 1910.66

Components

PD1- Davit Mast Assembly

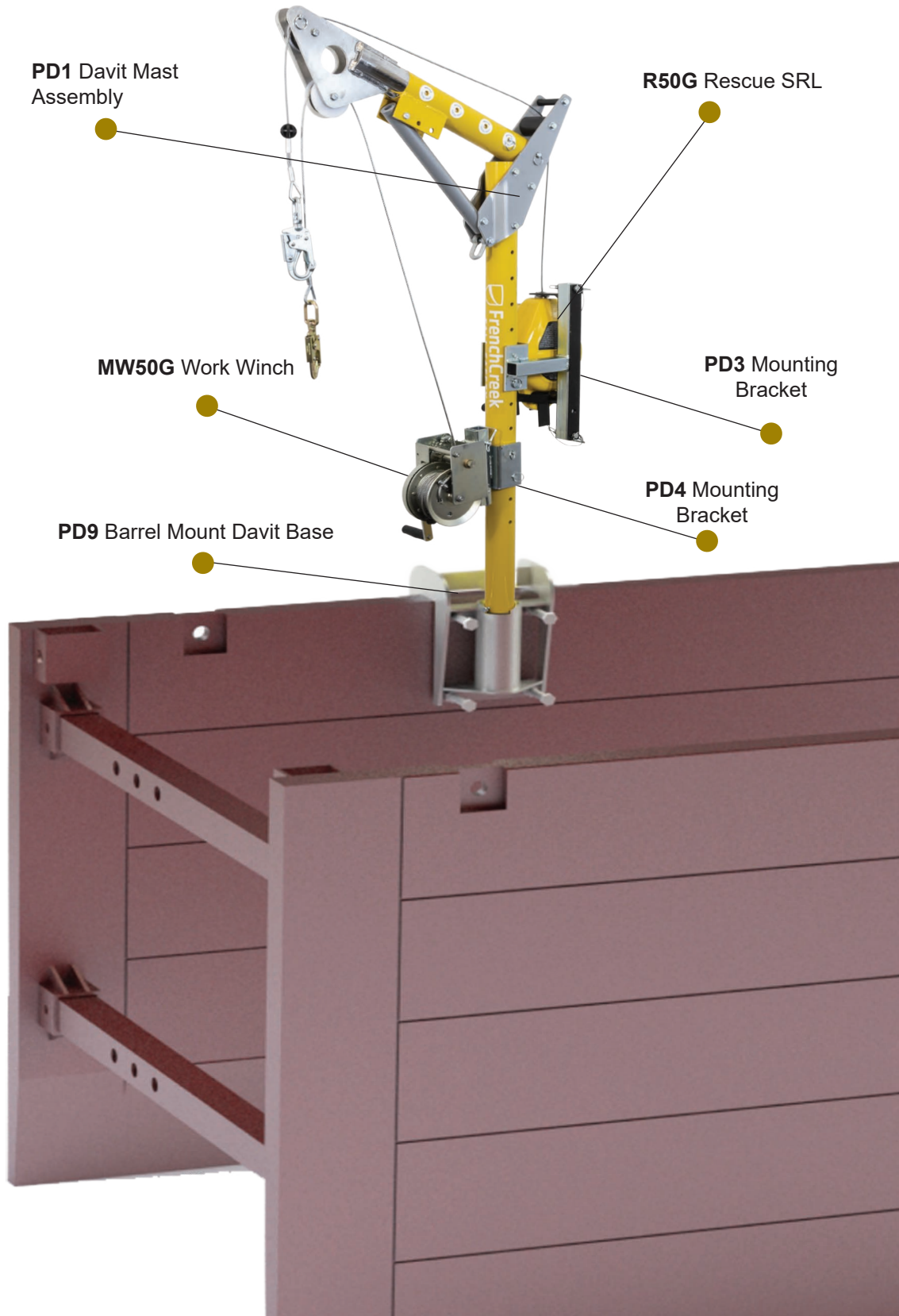
PD9- Barrel Mount Davit Base

PD3- R50G Mounting Bracket

PD4- MW50G Mounting Bracket

R50G- Rescue SRL

MW50G- Work Winch



Portable Davit System- Barrel Mount Davit Base

Ordering Information

PD1 Davit Mast Assembly

12"-30" offset reach



PD1

Davit mast assembly with telescoping adjustability from 12"-30". Includes attachment points for mechanical units. Used in conjunction with FrenchCreek Portable Davit system bases. Item weight 32.75 lbs.

PD9 Barrel Mount Davit Base

Attaches to properly rated structures 1/2" to 3-1/2" thick.



PD9

Attaches to properly rated structures 1/2" to 3-1/2" thick. 4pcs. 3/4" x 5" hex head set screws for securing to structure. Zinc plated welded steel construction with PVC mast sleeve insert. 180° mast rotation. 9" tall sleeve PVC insert. Item weight 32 lbs.

PD3 Mounting Bracket

Attaches R50G Rescue SRL



PD3

Used to attach R50G Rescue SRL to PD1 Davit Mast Assembly. Attaches with locking pins. Material: plated alloy steel. Item weight: 7.2 lbs.

PD4 Mounting Bracket

Attaches MW50G Work Winch



PD4

Used to attach MW50G Work Winch to PD1 Davit Mast Assembly. Attaches with locking pins. Material: plated alloy steel. Item weight: 4.8 lbs.

R50G Rescue SRL

ANSI Class SRL-R
3-way unit, 50' length



R50G

50' rescue SRL with raising/lowering capability. Mounts to PD1 Davit Mast Assembly using PD3 Mounting Bracket. Includes dual inertia braking system, pulleys & carabiner, load indicating snaphook. Three lifeline options: galvanized steel, stainless steel, technora rope. Aluminum cast housing. Item weight: 35 lbs.

MW50G Work Winch

50' length



MW50G

Offers raising and lowering capabilities with a friction brake that prevents the unit from free-wheeling when under a load. Mounts to PD1 Davit Mast Assembly using PD4 Mounting Bracket. Includes pulleys, carabiner and swivel snaphook. Three lifeline options: galvanized steel, stainless steel, technora rope. Aluminum cast housing. Item weight: 25 lbs.

Hitch Mount System- For Class 3 Minimum Vehicle Trailer Hitch

Designed to be used as a portable anchorage connector. Commonly used with rescue vehicles.

Specs

Weight Capacity-
130-310 lbs. ANSI

Capacity- 1 entrant only, 310 lb.
max

Item weight- 158.75 lbs.

Hardware Material- Powder
coated aluminum, plated alloy
steel

Lifeline- Galvanized steel wire
rope

Standards- OSHA 1926.502
ANSI 1910.66

Components

PD1- Davit Mast Assembly

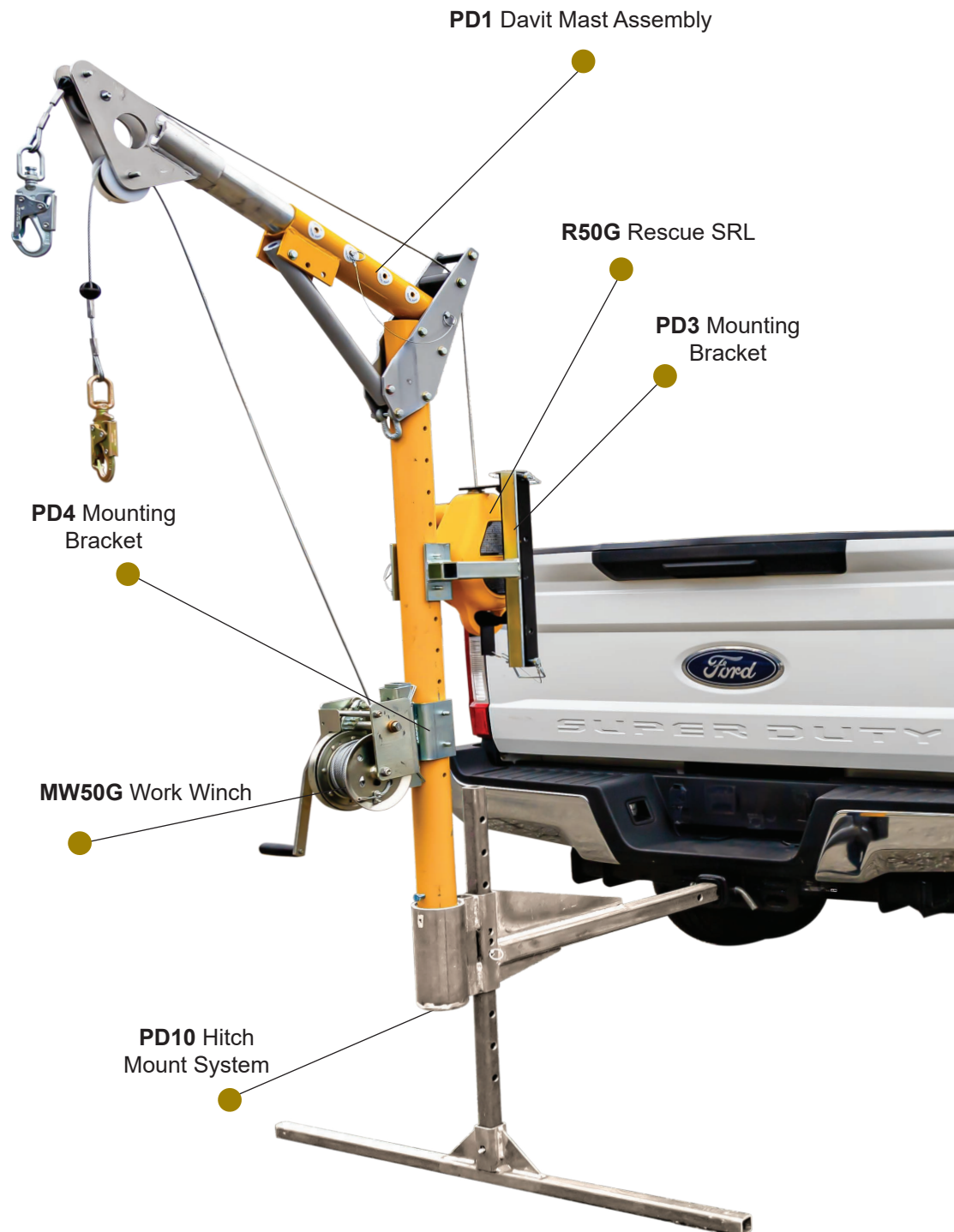
PD10- Hitch Mount System

PD3- R50G Mounting Bracket

PD4- MW50G Mounting Bracket

R50G- Rescue SRL

MW50G- Work Winch



Portable Davit System- Hitch Mount System

Ordering Information

PD1 Davit Mast Assembly

12"-30" offset reach



PD1

Davit mast assembly with telescoping adjustability from 12"-30". Includes attachment points for mechanical units. Used in conjunction with FrenchCreek Portable Davit system bases. Item weight 32.75 lbs.

PD10 Hitch Mount System

Installs into class 3 minimum vehicle trailer hitch.



PD10

Installs into class 3 minimum vehicle trailer hitch, 2" square receiver. 6"-30" height adjustment range provided in 1" increments. 9" tall plated carbon sleeve with insert. Compatible with PD1 Davit Mast Assembly. Weight 54 lbs.

PD3 Mounting Bracket

Attaches R50G Rescue SRL



PD3

Used to attach R50G Rescue SRL to PD1 Davit Mast Assembly. Attaches with locking pins. Material: plated alloy steel. Item weight: 7.2 lbs.

PD4 Mounting Bracket

Attaches MW50G Work Winch



PD4

Used to attach MW50G Work Winch to PD1 Davit Mast Assembly. Attaches with locking pins. Material: plated alloy steel. Item weight: 4.8 lbs.

R50G Rescue SRL

ANSI Class SRL-R
3-way unit, 50' length



R50G

50' rescue SRL with raising/lowering capability. Mounts to PD1 Davit Mast Assembly using PD3 Mounting Bracket. Includes dual inertia braking system, pulleys & carabiner, load indicating snaphook. Three lifeline options: galvanized steel, stainless steel, technora rope. Aluminum cast housing. Item weight: 35 lbs.

MW50G Work Winch

50' length



MW50G

Offers raising and lowering capabilities with a friction brake that prevents the unit from free-wheeling when under a load. Mounts to PD1 Davit Mast Assembly using PD4 Mounting Bracket. Includes pulleys, carabiner and swivel snaphook. Three lifeline options: galvanized steel, stainless steel, technora rope. Aluminum cast housing. Item weight: 25 lbs.

Barrel Mount/Trench Box Davit Base- 3" to 24" thick

Designed for bolt on installation to existing edges, walls and other properly rated structures.

Specs

Weight Capacity-
130-310 lbs. ANSI

Capacity- 1 entrant only, 310 lb.
max

Item weight- 150 lbs.

Hardware Material- Powder
coated aluminum, plated alloy
steel

Lifeline- Galvanized steel wire
rope

Standards- OSHA 1926.502
ANSI 1910.66

Components

PD1- Davit Mast Assembly

PD11- Barrel Mount Davit Base

PD3- R50G Mounting Bracket

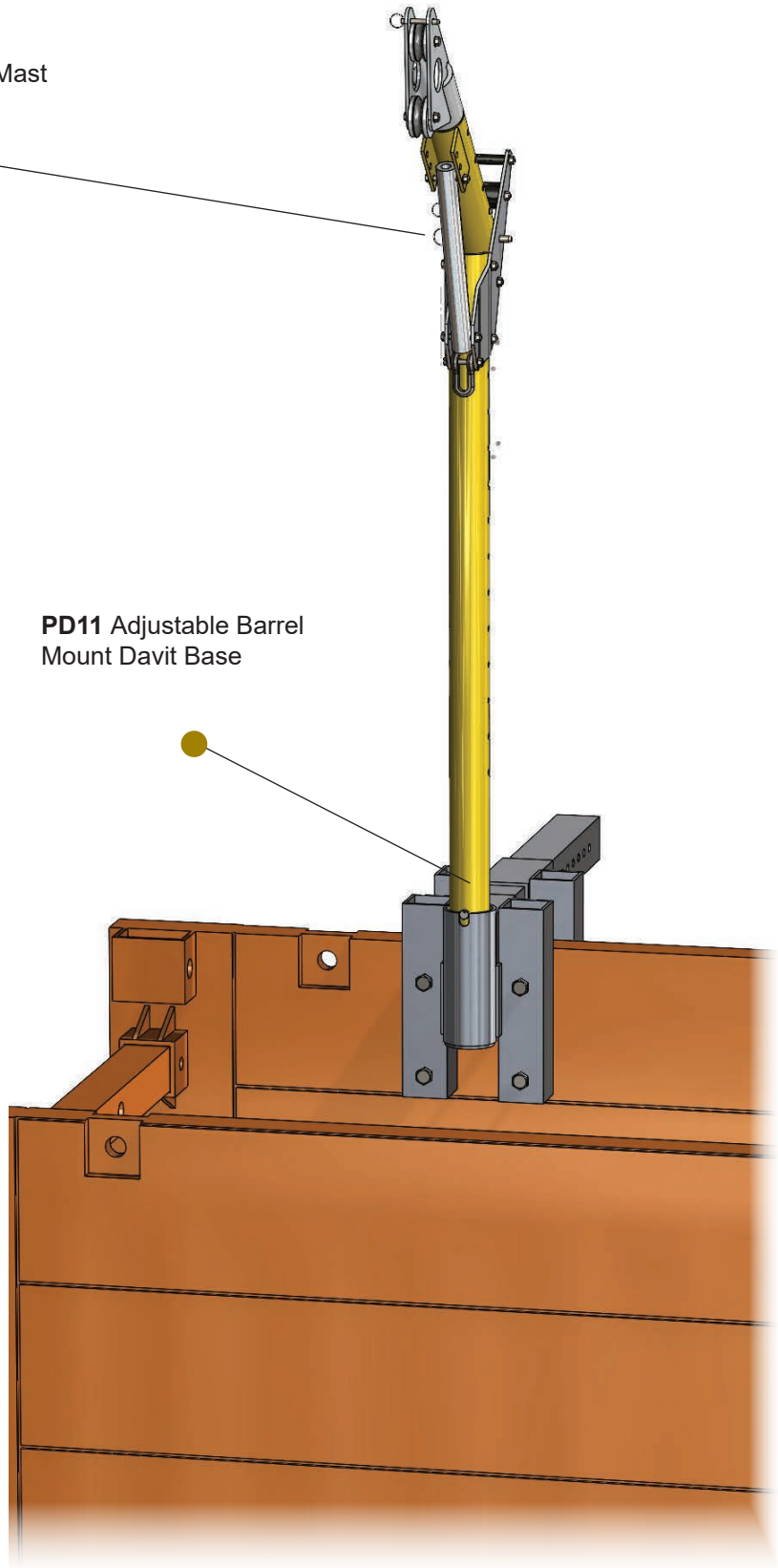
PD4- MW50G Mounting Bracket

R50G- Rescue SRL

MW50G- Work Winch

PD1 Davit Mast
Assembly

PD11 Adjustable Barrel
Mount Davit Base



Portable Davit System- Barrel Mount Davit Base

Ordering Information

PD1 Davit Mast Assembly

12"-30" offset reach

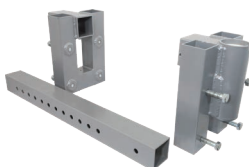


PD1

Davit mast assembly with telescoping adjustability from 12"-30". Includes attachment points for mechanical units. Used in conjunction with FrenchCreek Portable Davit system bases. Item weight 32.75 lbs.

PD11 Barrel Mount Davit Base

Attaches to properly rated structures 3" to 24" thick.



PD11

Attaches to properly rated structures 3" to 24" thick. 8pcs. 3/4" x 6" hex head set screws for securing to structure. Zinc plated welded steel construction with PVC mast sleeve insert. 180° mast rotation. 9" tall sleeve PVC insert. Item weight 48 lbs.

PD3 Mounting Bracket

Attaches R50G Rescue SRL



PD3

Used to attach R50G Rescue SRL to PD1 Davit Mast Assembly. Attaches with locking pins. Material: plated alloy steel. Item weight: 7.2 lbs.

PD4 Mounting Bracket

Attaches MW50G Work Winch



PD4

Used to attach MW50G Work Winch to PD1 Davit Mast Assembly. Attaches with locking pins. Material: plated alloy steel. Item weight: 4.8 lbs.

R50G Rescue SRL

ANSI Class SRL-R
3-way unit, 50' length



R50G

50' rescue SRL with raising/lowering capability. Mounts to PD1 Davit Mast Assembly using PD3 Mounting Bracket. Includes dual inertia braking system, pulleys & carabiner, load indicating snaphook. Three lifeline options: galvanized steel, stainless steel, technora rope. Aluminum cast housing. Item weight: 35 lbs.

MW50G Work Winch

50' length



MW50G

Offers raising and lowering capabilities with a friction brake that prevents the unit from free-wheeling when under a load. Mounts to PD1 Davit Mast Assembly using PD4 Mounting Bracket. Includes pulleys, carabiner and swivel snaphook. Three lifeline options: galvanized steel, stainless steel, technora rope. Aluminum cast housing. Item weight: 25 lbs.



fcsafety.com

©2022 FrenchCreek Production Inc.
100 N. 13th St.
Franklin, PA 16323

Please call to locate your nearest distributor
877.228.9327
814.437.1808

Tools shown not included.

Product descriptions and specifications
herein may change without notice.

PDS-LIT2

