

PDS
Portable Davit System

FrenchCreek's Portable Davit System is used to raise, lower, and suspend personnel performing routine work duties or to facilitate rescues in vertical confined space applications such as vaults, manholes, and pump stations.

- ✓ Davit base width adjusts from 36"-60", fits a wide range of openings
- ✓ Davit arm adjusts from 12"-30" offset reach to keep lifelines centered
- ✓ 3-piece base includes integrated bullseye level & tool free adjustment
- ✓ Davit meets OSHA 1926.502 and 1910.66 regulations

PD1
Davit Mast Assembly

- Telescoping adjustability from 12"-30"
- Primary and secondary pulleys for multiple devices
- Attachment points for mechanical devices
- Swiveling design allows easy hole exit & rescue
- Lightweight powder coated aluminum & alloy steel

R50G
3-Way Rescue SRL

- Requires PD3 mounting bracket for Davit System
- 50' galvanized wire rope lifeline
- Dual internal inertia breaking system
- Load indicating snaphook included
- Available in stainless steel & Technora® rope

PD3 & PD4
Mounting Brackets

- PD3 mounting bracket for R50G
- PD4 mounting bracket for MW50G

PD2
Davit System Base

- Base width adjusts from 36"-60"
- Integrated bullseye level
- Tool-free height adjustment
- Compatible with davit mast assembly
- Lightweight powder-coated aluminum & alloy steel

MW50G
Material Work Winch

- Requires PD4 mounting bracket for Davit System
- 50' galvanized wire rope
- Friction breaking system
- Available in stainless steel & Technora® rope
- Rugged, steel frame drum

Davit Base Options (see pages 112-115 for davit base options)

All Davit Bases Meet OSHA 1926.502 Regulations only when used as part of a FrenchCreek Portable Davit System

Portable Davit System

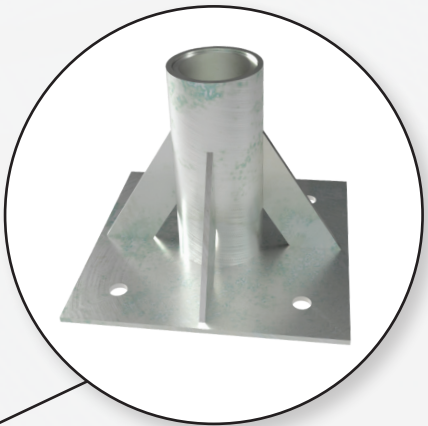
Available Base Options

FrenchCreek's portable davit system can be equipped with a wide range of bases to suit the application of your specific jobsite. All of which are compatible with the PD1 Davit Mast Assembly. See below for more info.

PD2

Adjustable Davit System Base

- Base width adjusts from 36"-60"
- Integrated bullseye level
- Tool-free height adjustment
- Lightweight powder-coated aluminum & alloy steel



PD7

Mount Sleeve Davit Base

- Bolts to horizontal concrete and steel structures
- Ideally suited for recurrent access locations
- 9" deep sleeve with PVC insert
- 360° mast rotation



PD10

Hitch-Mount Davit Base

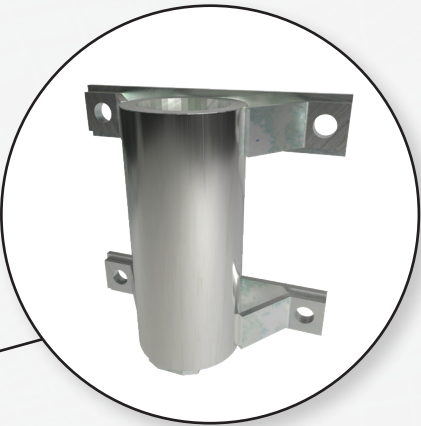
- Installs into class 3 minimum vehicle trailer hitch
- Compatible with 2" square receiver.
- Two detent pins quickly connect foot bar, vertical post and hitch bar
- 6" to 30" height adjustment range provided in 3" increments





PD8
Wall Mount Sleeve Davit Base

- Designed for shoring, wall and parapet locations
- Ideally suited for recurrent access locations
- 9" deep sleeve with PVC insert
- 360° mast rotation



PD5
Core Mount Sleeve Davit Base

- Designed for slip-in installation
- Fits 4" (0.10m) diameter core hole in concrete or in an existing steel structure
- Ideally suited for recurrent access locations
- 9" deep sleeve with PVC insert
- 360° mast rotation



PD6
Floor Mount Cast-in-Place Base

- Cast-in design for new concrete construction installation
- Rugged 8"x12" plate with 4" support rods provide long-lasting fixed base
- Flush floor profile perfect for high-traffic areas, reduces tripping hazards
- 9" deep sleeve with PVC insert
- 360° mast rotation